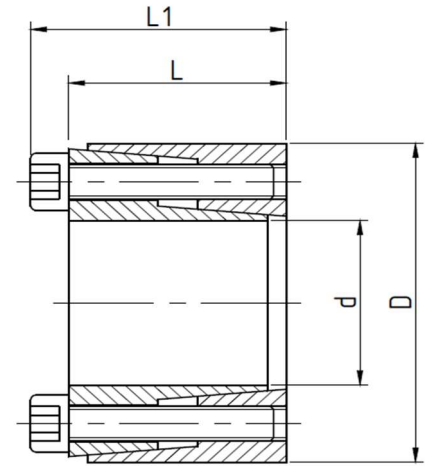


TRANSTEC Keyless Locking Device

XY-01

SELF CENTERING



Model	Dimensions		Rated Load		Pressure on Shaft Ps (N/mm ²)	Pressure on Hub Pn (N/mm ²)	Screw Tightening Torque Ts (Nm)	Kg
	dxDxL	L1	Axial (KN) Ft	Torque (Nm) Mt				
XY-01	6x16x11	13.5	3	9	184	69	1.2	0.012
XY-01	8x18x11	13.5	3	12	138	61	1.2	0.015
XY-01	9x20x13	15.5	4	16	138	62	1.2	0.020
XY-01	10x20x13	15.5	4	20	124	62	1.2	0.019
XY-01	11x22x13	15.5	4	22	113	56	1.2	0.024
XY-01	12x22x13	15.5	4	24	104	56	1.2	0.022
XY-01	14x26x17	20	6	42	99	53	1.2	0.039
XY-01	15x28x17	20	6	44	93	50	1.2	0.044
XY-01	16x32x17	21	10.4	83	152	76	5	0.067
XY-01	17x35x21	25	10.4	88	116	56	5	0.090
XY-01	18x35x21	25	10.4	93	109	56	5	0.087
XY-01	19x35x21	25	10.4	99	104	56	5	0.083
XY-01	20x38x21	26	17	170	161	85	10	0.100
XY-01	22x40x21 *	26	17	187	146	80	10	0.110
XY-01	24x47x26 *	32	24	287	153	78	17	0.200
XY-01	25x47x26 *	32	24	299	147	78	17	0.190
XY-01	28x50x26 *	32	36	503	196	110	17	0.220

* Denotes non-stock items - can be delivered against order

TRANSTEC Keyless Locking Device

XY-01

SELF CENTERING

Features

This locking element is a 2 piece assembly consisting of an outer cut ring, an inner cut ring and the associated clamping screws. Low to medium torques. Self centering. During mounting, slight axial displacement of the hub occurs. Available in very small sizes.

Machining Tolerances and surface quality

Clearance fit

Shaft diameter h8

Hub bore H8

By fine turned finish machined, shafts and hubs require a maximum :

Surface roughness $R_t \leq 16 \mu\text{m}$

$R_a \leq 3.2 \mu\text{m}$

Installation

Carefully clean and sparingly oil both shafts and hubs. Do not use oils with Molybdenum Bisulphide or EP oils. Insert the locking element, tighten the screws alternately, gradually and uniformly by several turns to the "Ts" torque rating shown in the table

Removal

Loosen all screws alternately, gradually and uniformly, remove two or more cap screws and then re-insert them into the threaded holes. As the screws enter, they contact the mating parts and become jackscrews that release the clamping action on the locking element, loosening it from the assembly

Installation examples

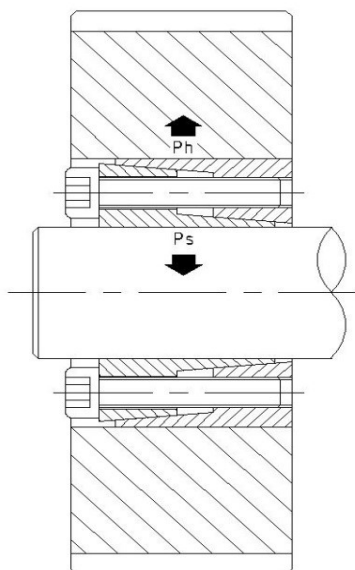


Fig. 1

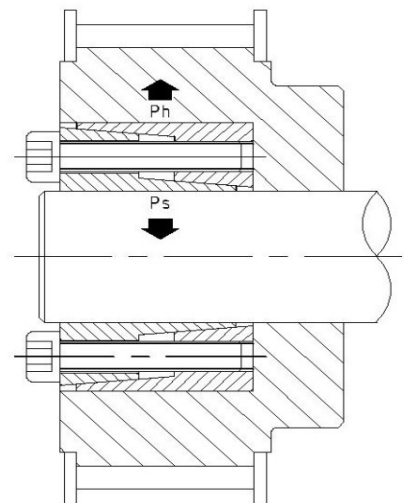


Fig. 2