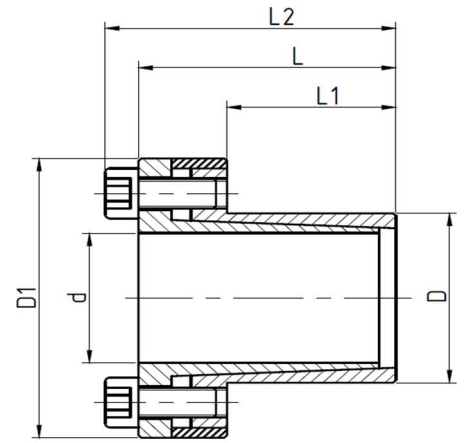


# TRANSTEC Keyless Locking Device

## XS-01

SELF CENTERING



Model	Dimensions				Rated Load		Pressure on Shaft Ps (N/mm <sup>2</sup> )	Pressure on Hub Ph (N/mm <sup>2</sup> )	Screw Tightening Torque Ts (Nm)	Kg
	dxDxL	L1	L2	D1	Axial (KN) Ft	Torque (Nm) Mt				
XS-01	6x14x21 *	10	24	25	4	12	185	80	2	0.04
XS-01	7x15x25 *	12	29	27	7	25	235	110	5	0.06
XS-01	8x15x25 *	12	29	27	7	29	205	110	5	0.05
XS-01	9x16x26 *	14	30	28	10	44	205	115	5	0.06
XS-01	10x16x26	14	30	28	10	49	185	115	5	0.06
XS-01	11x18x26 *	14	30	32	10	53	170	105	5	0.07
XS-01	12x18x26	14	30	32	10	58	160	105	5	0.07
XS-01	13x23x26 *	14	30	38	10	63	140	80	5	0.11
XS-01	14x23x26	14	30	38	10	68	130	80	5	0.10
XS-01	15x24x36	16	42	45	17	127	185	115	17	0.22
XS-01	16x24x36	16	42	45	17	136	175	115	17	0.22
XS-01	17x26x38	18	44	47	22	180	190	125	17	0.25
XS-01	18x26x38	18	44	47	22	200	180	125	17	0.24
XS-01	19x27x38	18	44	49	22	210	170	120	17	0.26
XS-01	20x28x38	18	44	50	22	220	160	115	17	0.27
XS-01	22x32x45	25	51	54	22	250	115	80	17	0.34
XS-01	24x34x45	25	51	56	22	270	105	75	17	0.36
XS-01	25x34x45	25	51	56	22	280	100	75	17	0.35
XS-01	28x39x45	25	51	61	33	465	135	97	17	0.48
XS-01	30x41x45	25	51	62	33	510	127	90	17	0.48
XS-01	32x43x45	25	51	65	33	540	120	90	17	0.47
XS-01	35x47x52	32	58	69	45	790	105	80	17	0.58
XS-01	38x50x52	32	58	72	45	860	100	75	17	0.61
XS-01	40x53x52	32	58	75	45	900	95	70	17	0.68
XS-01	42x55x52	32	58	78	45	950	90	70	17	0.76
XS-01	45x59x70	45	78	86	84	1890	110	85	41	1.20
XS-01	48x62x70	45	78	87	84	2010	105	80	41	1.20
XS-01	50x65x70	45	78	92	84	2100	100	75	41	1.40
XS-01	55x71x80	55	88	98	94	2600	85	65	41	1.60
XS-01	60x77x80	55	88	104	94	2840	75	60	41	1.80
XS-01	65x84x80	55	88	111	94	3070	70	55	41	2.00
XS-01	70x90x96	56	106	119	150	5250	90	70	83	2.83
XS-01	75x95x96	56	106	126	150	5600	80	65	83	3.08
XS-01	80x100x96	66	106	131	200	8020	100	80	83	3.25
XS-01	85x106x96 *	66	106	137	200	8500	95	75	83	3.56
XS-01	90x112x96	66	106	144	200	9000	90	75	83	3.60
XS-01	95x120x96	66	106	149	230	11000	100	80	83	4.38
XS-01	100x125x96	66	106	154	300	15000	120	95	145	5.00

\* Denotes non-stock items - can be delivered against order

Belcon Powertrans LLP, A9, New Sonal Industrial Estate, Saki Vihar Road, Mumbai 400072

Tel : +91 (22) 28575318/19/20 Mob : +91 9819942620 Email : sales@belcon.co.in

<https://www.belcon.co.in/>

# TRANSTEC Keyless Locking Device

## XS-01

### SELF CENTERING

#### Features

This locking element is supplied as an assembly consisting of an outer cut ring, an inner cut ring, spacer ring and the associated clamping screws. When tightening, the spacer ring fastens the hub axially providing the true clamp fit of the assembly. Self centering. Ideal for minimum radial dimensions. Designed to accommodate axial displacements

#### Machining Tolerances and surface quality

Clearance fit

Shaft diameter h8

Hub bore H8

By fine turned finish machined, shafts and hubs require a maximum :

Surface roughness  $Rt \leq 16 \mu\text{m}$

$Ra \leq 3.2 \mu\text{m}$

#### Installation

Carefully clean and sparingly oil both shafts and hubs. Do not use oils with Molybdenum Bisulphide or EP oils. Insert the locking element, tighten the screws alternately, gradually and uniformly by several turns to the "Ts" torque rating shown in the table

#### Removal

Loosen all screws alternately, gradually and uniformly, remove two or more cap screws and then re-insert them into the threaded holes. As the screws enter, they contact the mating parts and become jackscrews that release the clamping action on the locking element, loosening it from the assembly

#### Installation examples

The locking element type XS-01 may be installed without spacer ring and without ledge, as shown in fig. 1. In this case, the full action of the force developed by the clamping screws produces a 66% increase of values shown in the above table for Ft, Mt, Ps & Ph

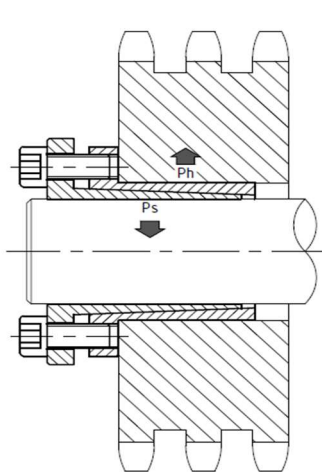


Fig. 1

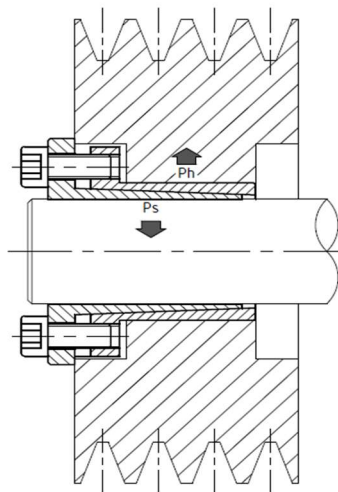


Fig. 2

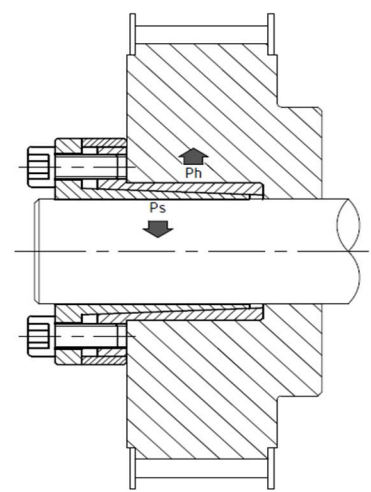


Fig. 3

Belcon Powertrans LLP, A9, New Sonal Industrial Estate, Saki Vihar Road, Mumbai 400072

Tel : +91 (22) 28575318/19/20 Mob : +91 9819942620 Email : sales@belcon.co.in

<https://www.belcon.co.in/>