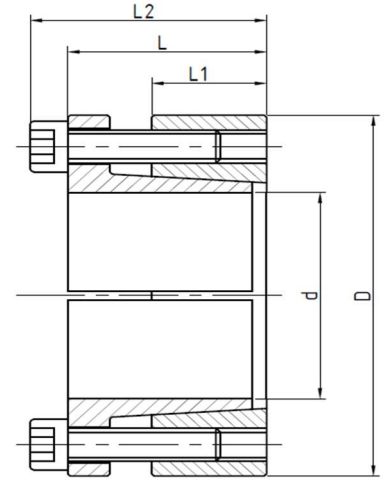


TRANSTEC Keyless Locking Device

XR-03

SELF CENTERING



Model	Dimensions			Rated Load		Pressure on Shaft Ps (N/mm ²)	Pressure on Hub Ph (N/mm ²)	Screw Tightening Torque Ts (Nm)	Kg
	dxDxL	L1	L2	Axial (KN) Ft	Torque (Nm) Mt				
XR-03	18x47x28	17	34	29	265	268	106	13	0.3
XR-03	19x47x28	17	34	29	273	262	106	13	0.3
XR-03	20x47x28	17	34	29	287	249	106	13	0.3
XR-03	22x47x28	17	34	29	316	227	106	13	0.3
XR-03	24x50x28	17	34	34	413	249	120	13	0.3
XR-03	25x50x28	17	34	34	431	239	120	13	0.3
XR-03	28x55x28	17	34	34	482	213	109	13	0.4
XR-03	30x55x28	17	34	34	517	199	109	13	0.3
XR-03	32x60x28	17	34	46	734	249	133	13	0.4
XR-03	35x60x28	17	34	46	803	227	133	13	0.4
XR-03	38x65x28	17	34	46	872	210	122	13	0.4
XR-03	40x65x28	17	34	46	918	199	122	13	0.4
XR-03	42x75x33	20	41	74	1563	261	146	32	0.8
XR-03	45x75x33	20	41	74	1674	244	146	32	0.7
XR-03	48x80x33	20	41	74	1750	242	137	32	0.8
XR-03	50x80x33	20	41	74	1860	219	137	32	0.8
XR-03	55x85x33	20	41	85	2340	228	148	32	0.8
XR-03	60x90x33	20	41	85	2553	209	139	32	0.9
XR-03	65x95x33	20	41	96	3110	217	149	32	0.9
XR-03	70x110x40	24	50	138	4838	243	154	65	2.1
XR-03	75x115x40	24	50	138	5184	226	148	65	2.2
XR-03	80x120x40	24	50	138	5530	212	142	65	2.3
XR-03	85x125x40 *	24	50	156	6610	225	153	65	2.4
XR-03	90x130x40	24	50	156	6998	212	147	65	2.6
XR-03	95x135x40 *	24	50	173	8208	223	157	65	2.7
XR-03	100x145x44	26	56	195	9742	221	152	110	3.7
XR-03	110x155x44 *	26	56	195	10716	201	143	110	4.0
XR-03	120x165x44 *	26	56	219	13154	207	151	110	4.3
XR-03	130x180x52 *	34	64	292	18996	195	141	110	5.9
XR-03	140x190x54 *	34	68	291	20336	180	133	170	6.3
XR-03	150x200x54 *	34	68	323	24211	187	140	170	6.7

* Denotes non-stock items - can be delivered against order

Belcon Powertrans LLP, A9, New Sonal Industrial Estate, Saki Vihar Road, Mumbai 400072

Tel : +91 (22) 28575318/19/20 Mob : +91 9819942620 Email : sales@belcon.co.in

<https://www.belcon.co.in/>

TRANSTEC Keyless Locking Device

XR-03

SELF CENTERING

Features

This locking element is supplied as an assembly consisting of an outer cut ring, an inner cut ring and the associated clamping screws. Self centering. Designed for medium to high torques

Machining Tolerances and surface quality

Clearance fit

Shaft diameter h8

Hub bore H8

By fine turned finish machined, shafts and hubs require a maximum :

Surface roughness $R_t \leq 16 \mu\text{m}$

$R_a \leq 3.2 \mu\text{m}$

Installation

Carefully clean and sparingly oil both shafts and hubs. Do not use oils with Molybdenum Bisulphide or EP oils. Insert the locking element, tighten the screws alternately, gradually and uniformly by several turns to the "Ts" torque rating shown in the table

Removal

Loosen all screws alternately, gradually and uniformly, remove two or more cap screws and then re-insert them into the threaded holes. As the screws enter, they contact the mating parts and become jackscrews that release the clamping action on the locking element, loosening it from the assembly

Installation examples

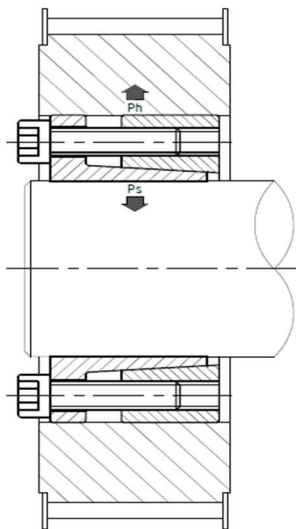


Fig. 1

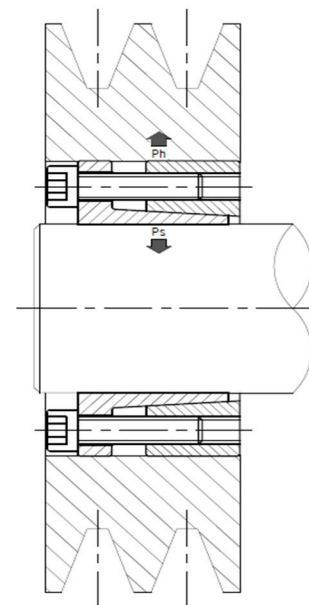


Fig. 2