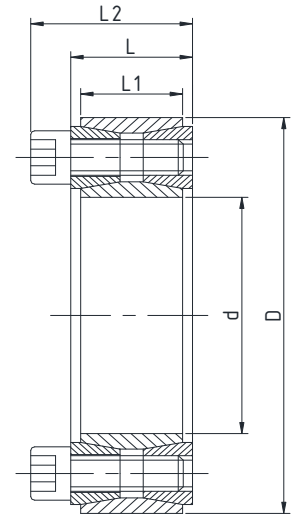


TRANSTEC Keyless Locking Device

XK-01

NOT SELF CENTERING



Model	Dimensions			Rated Load		Pressure on Shaft Ps (N/mm ²)	Pressure on Hub Pn (N/mm ²)	Screw Tightening Torque Ts (Nm)	Kg
	dxDxL	L1	L2	Axial (KN) Ft	Torque (Nm) Mt				
XK-01	19x47x20	17	27.5	29	280	225	95	16	0.2
XK-01	20x47x20	17	27.5	29	280	225	95	16	0.2
XK-01	22x47x20	17	27.5	29	310	210	95	16	0.2
XK-01	24x50x20	17	27.5	32	370	210	100	16	0.3
XK-01	25x50x20	17	27.5	32	400	200	100	16	0.3
XK-01	28x55x20	17	27.5	36	500	200	100	16	0.3
XK-01	30x55x20	17	27.5	36	530	185	100	16	0.29
XK-01	32x60x20	17	27.5	42	680	205	110	16	0.34
XK-01	35x60x20	17	27.5	43	750	190	110	16	0.3
XK-01	38x65x20	17	27.5	49	930	200	115	16	0.4
XK-01	40x65x20	17	27.5	49	980	190	115	16	0.3
XK-01	42x75x24	20	33.5	75	1580	235	130	38	0.6
XK-01	45x75x24	20	33.5	76	1700	220	130	38	0.57
XK-01	48x80x24	20	33.5	74	1790	210	120	38	0.62
XK-01	50x80x24	20	33.5	75	1870	200	120	38	0.6
XK-01	55x85x24	20	33.5	88	2390	210	135	38	0.6
XK-01	60x90x24	20	33.5	88	2610	190	125	38	0.7
XK-01	65x95x24	20	33.5	98	3210	200	135	38	0.7
XK-01	70x110x28	24	39.5	132	4600	210	130	75	1.3
XK-01	75x115x28	24	39.5	131	4900	195	125	75	1.3
XK-01	80x120x28	24	39.5	131	5200	180	120	75	1.4
XK-01	85x125x28 *	24	39.5	148	6300	195	130	75	1.4
XK-01	90x130x28	24	39.5	147	6600	180	125	75	1.5
XK-01	95x135x28	24	39.5	167	7900	195	135	75	1.6
XK-01	100x145x33	26	47	195	9750	195	135	130	2.2
XK-01	105x150x33 *	26	47	195	9960	185	130	130	2.4
XK-01	110x155x33 *	26	47	194	10650	180	125	130	2.5
XK-01	120x165x33 *	26	47	221	13300	185	135	130	2.6
XK-01	125x170x33 *	26	47	220	13780	180	125	130	3.2
XK-01	130x180x38 *	34	52	276	17850	165	115	130	3.8
XK-01	140x190x38 *	34	52	302	21200	165	125	130	3.9
XK-01	150x200x38 *	34	52	329	24500	170	125	130	4

* Denotes non-stock items - can be delivered against order

Belcon Powertrans LLP, A9, New Sonal Industrial Estate, Saki Vihar Road, Mumbai 400072

Tel : +91 (22) 28575318/19/20 Mob : +91 9819942620 Email : sales@belcon.co.in

<https://www.belcon.co.in/>

TRANSTEC Keyless Locking Device

XK-01

NOT SELF CENTERING

Features

This locking element is supplied as an assembly consisting of an outer cut ring, an inner cut ring, two conical rings to be inserted opposite in the cut rings and the associated clamping screws. Not self centering. Designed for medium to high torques

Multiple Installation

When significant torque ratings are required, upto 4 locking elements of type XK-01 can be used in a row - see Fig. 2. The transmissible total torque rating is given as follows :

with 1 locking element $M_t = M_t$ (from above specifications)

with 2 locking elements $M_t = M_t \times 1.9$

with 3 locking elements $M_t = M_t \times 2.7$

with 4 locking elements $M_t = M_t \times 3.6$

Machining Tolerances and surface quality

Clearance fit

Shaft diameter h11

Hub bore H11

By fine turned finish machined, shafts and hubs require a maximum :

Surface roughness $R_t \leq 16 \mu m$

$R_a \leq 3.2 \mu m$

Installation

Carefully clean and sparingly oil both shafts and hubs. Do not use oils with Molybdenum Bisulphide or EP oils. Insert the locking element, tighten the screws alternately, gradually and uniformly by several turns to the "Ts" torque rating shown in the table

Removal

Loosen all screws alternately, gradually and uniformly. If necessary, tap lightly on the screws in order to release the back ring. If this does not work, remove the zinc plated screws to have access to the jacking off holes. Insert screws of superior sizes in the jacking off holes and pull in order to release the assembly. The thread of jacking off holes is not through!

Installation examples

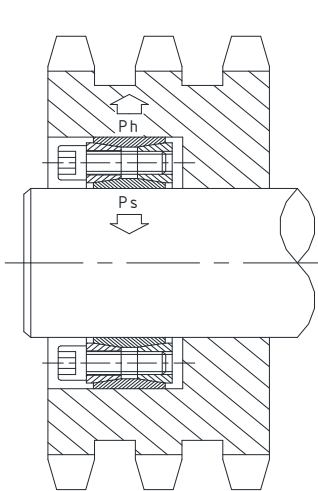


Fig. 1

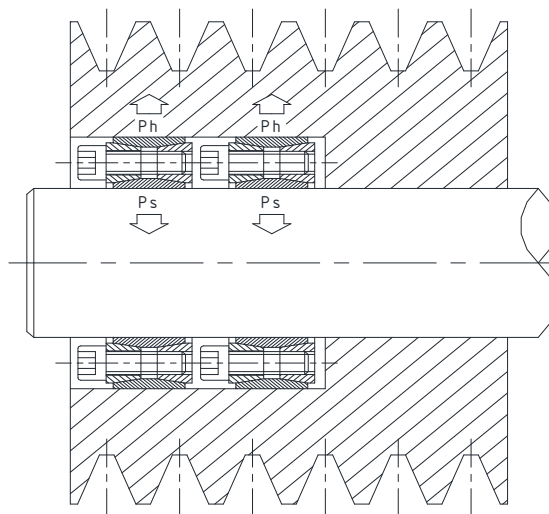


Fig. 2

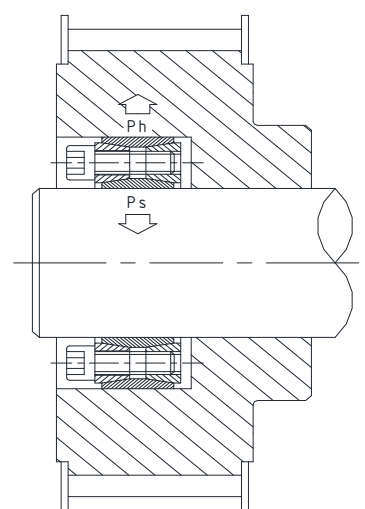


Fig. 3

Belcon Powertrans LLP, A9, New Sonal Industrial Estate, Saki Vihar Road, Mumbai 400072

Tel : +91 (22) 28575318/19/20 Mob : +91 9819942620 Email : sales@belcon.co.in

<https://www.belcon.co.in/>